

THE HOSPITAL WORLD.

On November 25th the Queen will open the Westminster City Council's new maternity and child welfare centre at Bessborough Street. She has expressed the wish that no undue expense shall be incurred.

Members of the Royal Family have recently paid visits to many hospitals and will therefore have seen the wonderful progress being made in hospital equipment and management in all directions.

Visits have been made to the new Maternity Wards and Clinic of the Alexandra Homes, Devonport; the new extension of the Fleet and District Hospital; the Royal Infirmary, Cardiff; the new nurses' home and extensions in the Peace Memorial Hospital, Watford; the new wing to the Salisbury General Infirmary, and the King George Hospital, Ilford.

The Royal visitors, seeing as they have done the fine order of these institutions and everywhere groups of smart, orderly nurses of healthy and happy appearance, must wonder where are to be found the down-trodden serfs over whom the daily press are weeping copious tears of ink!

Let us realise and own up that nursing is and always will be arduous, selfless work—just such work as by contrast with less exacting duty, is only suitable for women with the highest sense of life's responsibilities. It is not given to every girl to realise the pain of sickness and heartbreak of suffering humanity. Let us be thankful there are so many who do—and who are willing to alleviate it. There is a life worth living.

Her Majesty the Queen has consented to be present at a special performance of *Macbeth* at the Old Vic on Monday, November 29th, at 8 p.m., in aid of the Centenary Fund of King's College Hospital.

It is hoped that the new Medical School and Nurses' Home of the new Westminster Hospital will be in readiness for opening in February next, a ceremony which Queen Mary has promised to perform. These fine buildings are facing St. John's Gardens, Horseferry Road, and are already well advanced.

An immense amount of expert experience has been devoted to the construction of the new Nurses' Home by Miss Edith Smith, the Matron of Westminster Hospital,

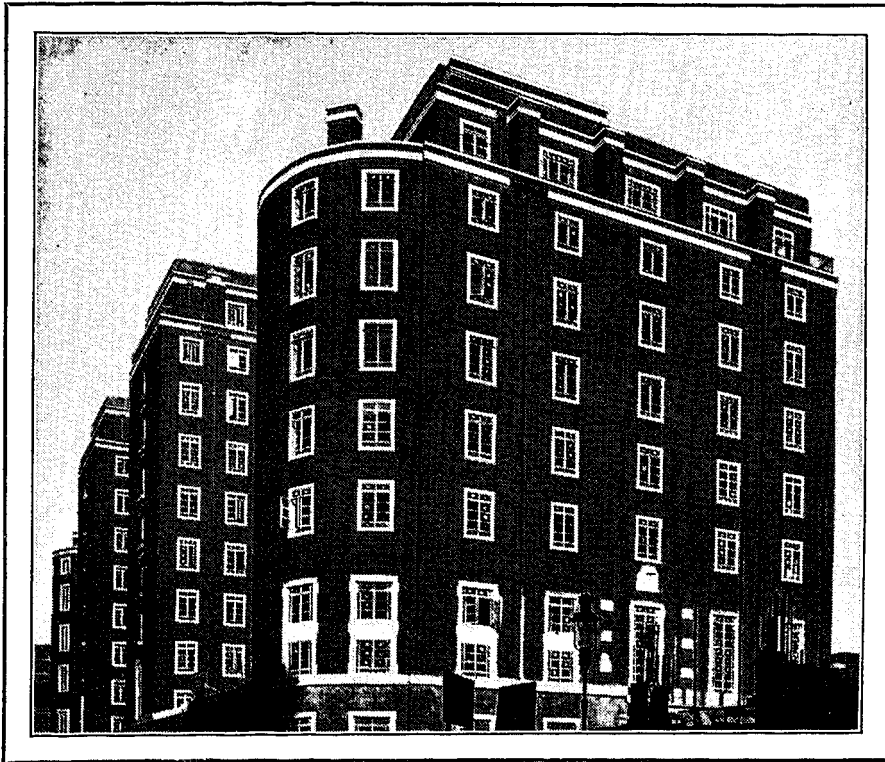
and a committee of women under the chairmanship of the Dowager Lady Harcourt have the matter under consideration. Each nurse is to have her own charmingly decorated bedroom. Special curtains have been designed for the windows to exclude all light when drawn and still allow a free passage of air. Wardrobes are built-in. The Sisters will have both sitting and bedroom, the Staff Nurses bed-sitting rooms. Every detail for comfort appears to have been thought out. Reading, smoking, recreation, bathrooms and shampoo rooms are available, with box-rooms and gymnasium in the basement. Indeed, it would appear that Westminster is to have a luxury home for its nurses, so there should be no lack of applicants for training. We, of course, trained in the "hair shirt" period—and found it stimulating. We plead for the culture of "back-bone" amidst manifold temptations to ease.

Improvements costing altogether £145,000 are to be made in certain L.C.C. hospitals.

They include alterations and additions to St. Margaret's Hospital, Kentish Town; erection at a cost of over £38,700 of a new maternity block at Lambeth Hospital; and provision of a new ward block at Mile End Hospital at a cost of nearly £5,000.

The Hospitals' Committee has accepted a £25,000 tender for the erection of a new nurses' home at St. Clement's Hospital, Poplar.

Lord Wakefield has given a further cheque for £1,000 to the rebuilding fund of the National Hospital for Diseases of the Nervous System, Queen Square. His donations to this hospital this year now total £4,000.



The Marsham Street elevation of the Medical School and Nurses' Home of the new Westminster Hospital, which is nearly completed.

On Monday, November 15th, the Right Hon. the Viscount Dawson of Penn, G.C.V.O., K.C.B., who was introduced by the President, the Right Hon. the Earl of Derby, K.C., opened the Private Patients' Home at the Manchester Royal Infirmary at 3 p.m. The occasion was an interesting one, and the new Home will no doubt be much appreciated by the class of the community whom it is designed to benefit.

The project to establish an Australian College of Physicians has, the *Lancet* announces, been realised. The new college has been planned to some extent on the model of the Royal College of Physicians of London.

[previous page](#)

[next page](#)